



Parking Brake Caliper Installation Instructions

1. Install caliper bracket to star plate with washer against the star plate.

On 3/8" thick star plate use the supplied 1/2" - 13 x 1 1/2" long hex head bolt, washer and lock nut for the lower caliper bracket and 1/2" - 13 x 2" long for upper caliper / fender bracket mounting hole. Torque to 65 ft. lbs.

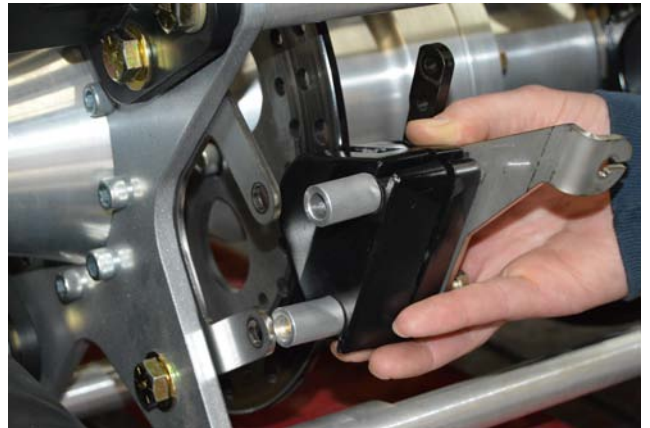
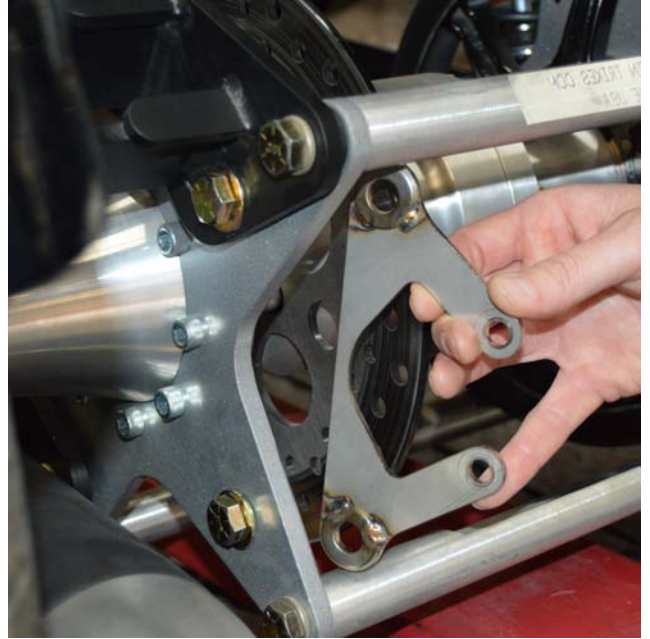
On 1" thick star plate use the supplied 1/2" - 13 x 1 3/4" long hex head bolt, washer and lock nut for the lower caliper bracket and 1/2" - 13 x 2 1/2" long for upper caliper / fender bracket mounting hole. Torque to 65 ft. lbs.

2. Remove supplied shims from caliper assembly bolts, slide assembly over rotor and bolt to bracket with spacers only.

On 3/8" thick star plate use 1" spacers with 3/8" - 16 x 3 1/2" long hex head bolt.

On 1" thick star plate use 3/8" spacers with 3/8" - 16 x 3" long hex head bolt.

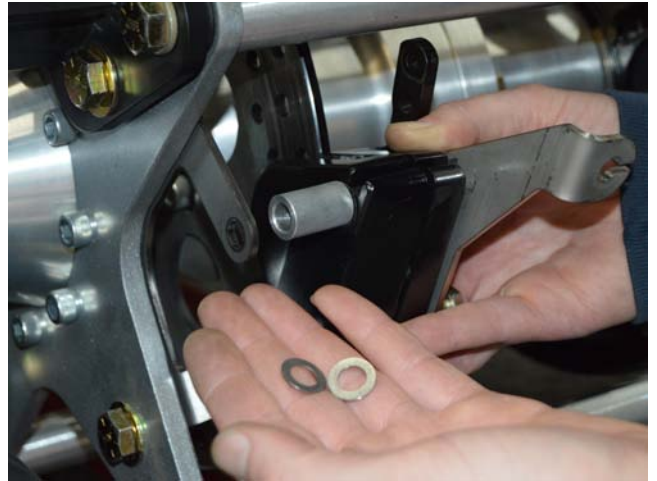
3. Check stationary pad to rotor clearance. Fold a dollar bill in to fourths (1/2 then 1/2 again). Sliding the bill between rotor and stationary pad. There needs to be slight dragging.





Parking Brake Caliper Installation Instructions

4. If the gap is too big use some of the supplied shims to move the caliper closer to rotor until proper gap is achieved. The gap should be between 0.015" to 0.020" (slight dragging with the dollar bill)



5. Use the same dollar bill to set the gap on the lever side of the caliper. Use the adjuster bolt to set the gap between the rotor and brake pad. The gap should be between 0.015" to 0.020" (slight dragging with the dollar bill)



6. Once the gap is set, hold the adjuster bolt and tighten the jam nut.

